

INDUSTRIAL HEAT EXCHANGER

V SERIES

Multitube. Non removable tube bundle.

INDUSTRIAL LINE

Designed both thermal and mechanically to ensure long life and high reliability.

OPERATION

Standard V Series models consist of a tubular bundle within a shell. The product flows through the inner tubes while the service does it through the outer channel.



APPLICATIONS

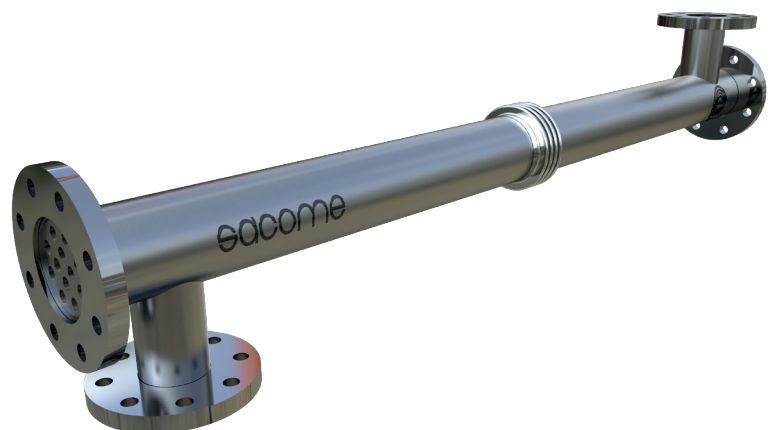
The V Series is designed for heating or cooling fluids such as water, glycol, CIP solutions or sanitary water, among others. Being manufactured against stock and having a compact size allows to be a quick and economical solution.

ADVANTAGES OF CORRUGATION

- *HYGIENIC PROFILE*
- *DIFFERENT CORRUGATION GEOMETRIES (HARD/SOFT/PLAIN)*
- *TURBULENT FLOW (LOWER REYNOLDS NUMBER THAN FOR SMOOTH TUBES)*
- *HIGHER HEAT TRANSFER COEFFICIENTS AND LOWER EXCHANGE AREA*
- *HOMOGENEOUS THERMAL TREATMENT*
- *LOWER FOULING*
- *SHORTER RESIDENCE TIMES*
- *LONGER RUNNING TIMES*

ADVANTAGES OF TUBULAR HEAT EXCHANGER

- *LOW MAINTENANCE COSTS*
- *HIGH WORKING PRESSURES*
- *HIGH WORKING TEMPERATURES*
- *PROCESSING OF PARTICULATE OR FIBRE PRODUCTS*
- *EASY INSPECTION AND DISASSEMBLY*
- *HIGH SECURITY IN ASEPTIC PROCESSES*
- *EASY TO ENLARGE*



Discover all the advantages of corrugation in tubular heat exchangers
sacome.com/corrugated-shell-and-tube-heat-exchangers

www

SACOME HEAT EXCHANGER TYPE DEFINITION
I-V3-24-1-129/18-1500-316L/316L-H
INDUSTRIAL LINE
V3
MULTITUBULAR STANDARD V SERIES
24
NUMBER OF INNER TUBES
0/1
WITHOUT / WITH EXPANSION JOINT
129
Ø SHELL (mm)
18
Ø INNER TUBE (mm)
1500
NOMINAL LENGTH (mm)
316L
SHELL SIDE MATERIAL
316L
TUBE SIDE MATERIAL
H/S/P
**CORRUGATION INDICATOR
(HARD / SOFT/ PLAIN)**
**STANDARD
DESIGN CONDITIONS**

Design temperature
180 °C

Design pressure
10 barg

For higher design pressure or temperatures as well as hazardous fluids, the heat exchangers can be checked according to AD 2000 Merkblätt, ASME VIII Div.1, PD 5500, EN13445 or by Finite Elements Analysis and CE certificated by individual inspection modules.

* Included: 3.1 Quality certificate and CE Marking according to 2014/68/UE.

**AVAILABLE
CONNECTIONS**
Flange EN1092-1

* According Image 1 and Table 1

SURFACE FINISH

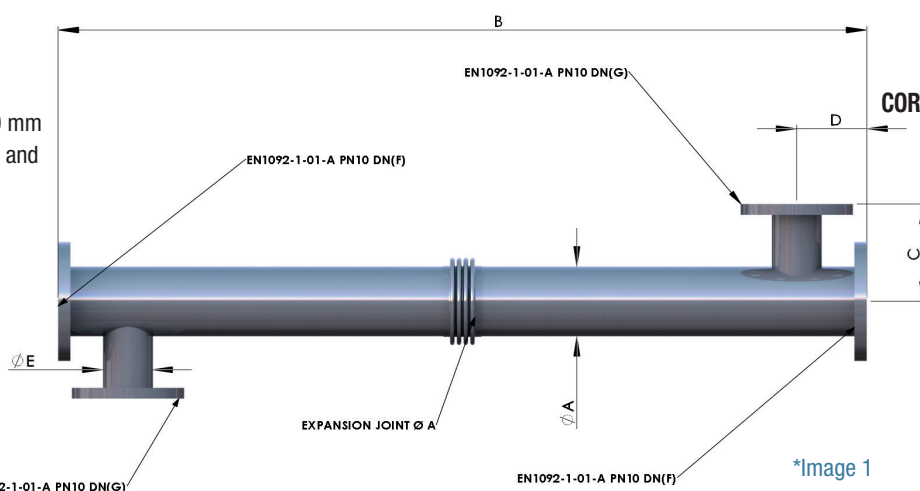
External
Matt
OPTIONS
INTERCONNECTIONS

In case the equipment contains several units in series, SACOME can provide the interconnections for the product channel and the service channel.

MATERIALS

Shell & Tubes
Stainless Steel 316L
**STANDARD
MEASURES**

V0 - 750 mm,
V1/V2/V3/V4 - 1500 mm
*According Image 1 and Table 1



*Table 1

MODEL	DIMENSIONS (mm)							AREA (m²)	VOLUME (L)		UNLADEN WEIGHT (Kg)
	A	B	C	D	E	F	G		TUBE	SHELL	
V0	76,2	739	153	90	50,8	65	40	0,25	0,8	1,7	12
V1	76,2	1439	153	90	50,8	65	40	0,5	1,8	3,7	18
V2	101,6	1439	165,8	108	76,2	80	65	1	3,7	6,4	28
V3	129	1439	179,5	124,5	88,9	100	80	2	7,4	8,9	36
V4	151	1439	199	131	88,9	125	80	3	11,1	13,2	52